

≡ SANRIZZ<sup>®</sup>  
ACADEMY

**EVOLUTION**  
**OPEN DAY COURSE**

# OPEN DAY

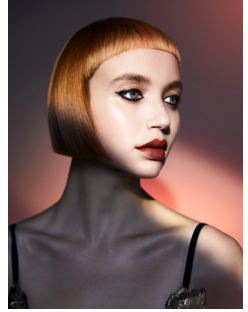
## CUT & COLOUR COURSE

### EVOLUTION



DRAMATIC MIX OF THE MOULIN ROUGE MUSE, SHOWCASING A BALANCE BETWEEN STRUCTURE AND FLUIDITY.

**CUTS** FEATURE STATIC, SCULPTURAL SHAPES CONTRASTED WITH EXPRESSIVE SILHOUETTES, USING MULTI-LAYERING TECHNIQUES TO CREATE A SENSE OF ENERGY, LIGHTNESS, AND AN UNDONE MODERN EDGE.



**THE COLOUR** PALETTE IS ELECTRIFYING, WITH WARM AMBER, FIERY ORANGE, AND DEEP REDS ENRICHED BY TEAL GREENS AND SOFTENED WITH DELICATE LEMON, CAPTURING VIBRANCY AND INDIVIDUALITY WITH A BOLD, DYNAMIC SPIRIT.

### PROGRAMME

- 09:45 WELCOME & INTRODUCTION TO SANRIZZ CREATIVE TEAM
- 10:00 INTRODUCTION TO THE FUNDAMENTALS OF "EVOLUTION" AND DEMONSTRATION
- 11.30 SHORT BREAK
- 11.45 DEMONSTRATION CONTINUE
- 13:00 LUNCH BREAK
- 14:00 CONTINUE DEMONSTRATION, UNDERSTAND THE IMPORTANCE OF QUALITY WITH "EVOLUTION"  
FINISH AND CHANGEABLE STYLING
- 16:00 FINALE OF ALL MODELS
- 17:00 DIPLOMA PRESENTATION AND END